

## Contents

0.0: REVISION NOTICES .....	3
1.0: SAFETY PRECAUTION .....	4
2.0: IDENTIFICATION .....	7
2.1: The product brand and type designation .....	7
2.2: Version of product .....	7
2.3: Manufacturer contact: .....	7
3.0: PRODUCT SPECIFICATION .....	7
3.1: Declaration of conformity with standards of products .....	7
3.2: Flow diagram.....	8
3.3: Range of applications intended use and general functions.....	9
3.4: Dimensions (for transport) .....	9
3.5: Safety components .....	9
3.6: Specification for electricity and air .....	10
3.7: Blade specification .....	10
4.0: INSTALLATION .....	11
4.1: Minimal Space Required .....	11
4.2: Procedure for unpacking.....	11
4.3: positioning and leveling .....	12
5.0: OPERATION .....	13
5.1: Control .....	13
5.1.1: Emergency button.....	13
5.1.2: Fault state light .....	13
5.1.3: Power ON state light.....	13
5.1.4: Conveyor ON/OFF: .....	13
5.1.5: Slicer ON/OFF.....	13
5.2: Cut adjustment overview.....	14
5.2.1. Compression Belt Setup overview .....	14
5.2.1: Blade setup overview.....	14
5.3: Step-by-step blade adjustment.....	15
5.4: Not sliced product setup.....	16
5.5. Start the slicer .....	17

5.6: Safety switch status .....	17
6.0: MAINTENANCE AND CLEANING .....	18
6.1: Preventive maintenance schedule.....	18
6.2: Maintenance steps.....	19
6.2.1: Blade replacement.....	19
6.2.2: Oil canister .....	21
6.2.4: Conveyor Belts .....	22
6.5.5: Chain .....	23
6.5.6: Gear boxes .....	23
6.5.7: Safety .....	24
6.5.8: Pistons.....	24
6.3: Cleaning.....	24
6.3.1: Cleaning interior.....	24
6.3.2: Cleaning the blade compartment .....	24
7.0: MAINTENANCE AND REPARATIONS BY TECHNICIANS FROM KLR SYSTEMS INC. ....	25
7.1: Addresses and contact information for service technicians.....	25
7.2: Technical support.....	25
7.3: Parts order .....	25
8.0: LISTS OF SPARE PARTS AND CONSUMABLES .....	26
9.0: DECOMMISSIONING OF THE PRODUCT .....	26
10.0: EXPLODED VIEWS.....	27
10.1: KLR.2000 .....	27
10.2: MAIN ASSEMBLY .....	28
10.3: FRAME.....	29
10.3.1: FRAME PART LIST .....	30
10.4: CONVEYOR .....	31
10.4.1: CONVEYOR PART LIST .....	32
10.5: COMPRESSION BELT.....	33
10.5.1: COMPRESSION BELT PART LIST .....	34
10.6: GUARDS.....	35
10.6.1: GUARDS PARL LIST .....	36
10.7: BLADE COMPARTMENT .....	37
10.8: CONVEYOR MOTOR .....	38

10.8.1: CONVEYOR MOTOR PART LIST..... 39

10.9: SLICER MOTOR ..... 40

10.10: BLADE TENSIONER ..... 41

10.11: BLADE MECHANISM ..... 42

10.11.1: BLADE MECHANISM PART LIST ..... 43

10.12: SPLINE SHAFT ..... 44

10.13: OIL CANISTER OPTION..... 45

10.14: BLADE COMPARTMENT COVER ..... 46

KLR.2000

Horizontal slicer manual

Serial number: KLR-00183 - beyond



Revision: 2024-08-21

## 0.0: REVISION NOTICES

2024-08-21:

- Updating the manual to the new format.

## 1.0: SAFETY PRECAUTION



# CAUTION

- The equipment described in this manual is covered with fix panel (only opened with a tool) that provide protection from electrical components and most of mechanical motions. However, there is four (4) belts that can be exposed to the user. ALWAYS turn OFF the machine before approaching hands from every motion part to remove a jam, service or clean the machine. Go against this notice can result in a severe injury or death;
- Special attention made to ensure that the operation of the machine is safe and convenient without compromising the efficiency. Keeps hands away from the running blade, conveyor belts and moving parts. Keeps hands and clothes away from the working area of the machine;
- Keep hands away from the working machine. Do not force through remaining gaps;
- If the system is linked to another machine or install onto another machine. Lock the electrical box of the other machines before performing any maintenance on this equipment. Please refer to the local regulations and laws on locking out machinery. Go against this notice can result in a severe injury or death;
- When working on the electrical components. Disconnect the equipment at the source and use a lockout device to avoid any risk of danger. Make sure you also have the space required to complete the work to avoid any risk of danger.
- Any modifications with any aspect of the mechanical, safety, electrical design, design, or any parts connected with the equipment will void the warranty and liability of KLR Systems. If a change is required, contact KLR Systems for approval. All technical handling must be done by a qualified technician or by KLR Systems;
- KLR is not responsible for any abuse, mishandling, misuse, improper maintenance and repair by owners and users;
- Equipment must be supervised when operating;

Continue the next page...



# CAUTION

- Safety switches: DO NOT bypass any safety components for any reason. Violation will void all warranties and responsibility from KLR Systems. If a safety component is broken, it must be replaced before starting the machine;
- Safety panel (fix panel) or safety doors: As a safety, component does not try to remove or unscrew them unless it is necessary for a maintenance operation. If it is the only option, use a lockout device during this procedure and reassemble every single piece as it was when finished;
- When the machine is set with an interlock, that means it is controlled by another equipment. Be careful when handling the equipment because it may start when you do not expect it. ALWAYS keep hand away from belts and mechanisms even when the machine is stopped.



Leave this door closed while the machine is running.  
NEVER bypass the systems put in place for the safety of the user.



As soon as all the conditions are reached, the machine is ready to start a movement.

ALWAYS padlock the machine for any kind of maintenance or cleaning.



KEEP your hands away from this place .

Continue the next page...



# CAUTION

- Always wear a pair of **Cut-resistant glove** when manipulating the blade.



## 2.0: IDENTIFICATION

### 2.1: The product brand and type designation

KLR.2000

Horizontal slicer

### 2.2: Version of product

Serial number: located on the safety panel close to the control panel:



### 2.3: Manufacturer contact:

KLR SYSTEMS INC. Packaging equipment manufacturer

Address: 944 rue des Hérons,

City, province, country: SAINT-PIE, QUEBEC, CANADA

Zip code: J0H 1W0

Phone number: 450-388-0404

Web site: <http://klrsystems.com/>

## 3.0: PRODUCT SPECIFICATION

### 3.1: Declaration of conformity with standards of products

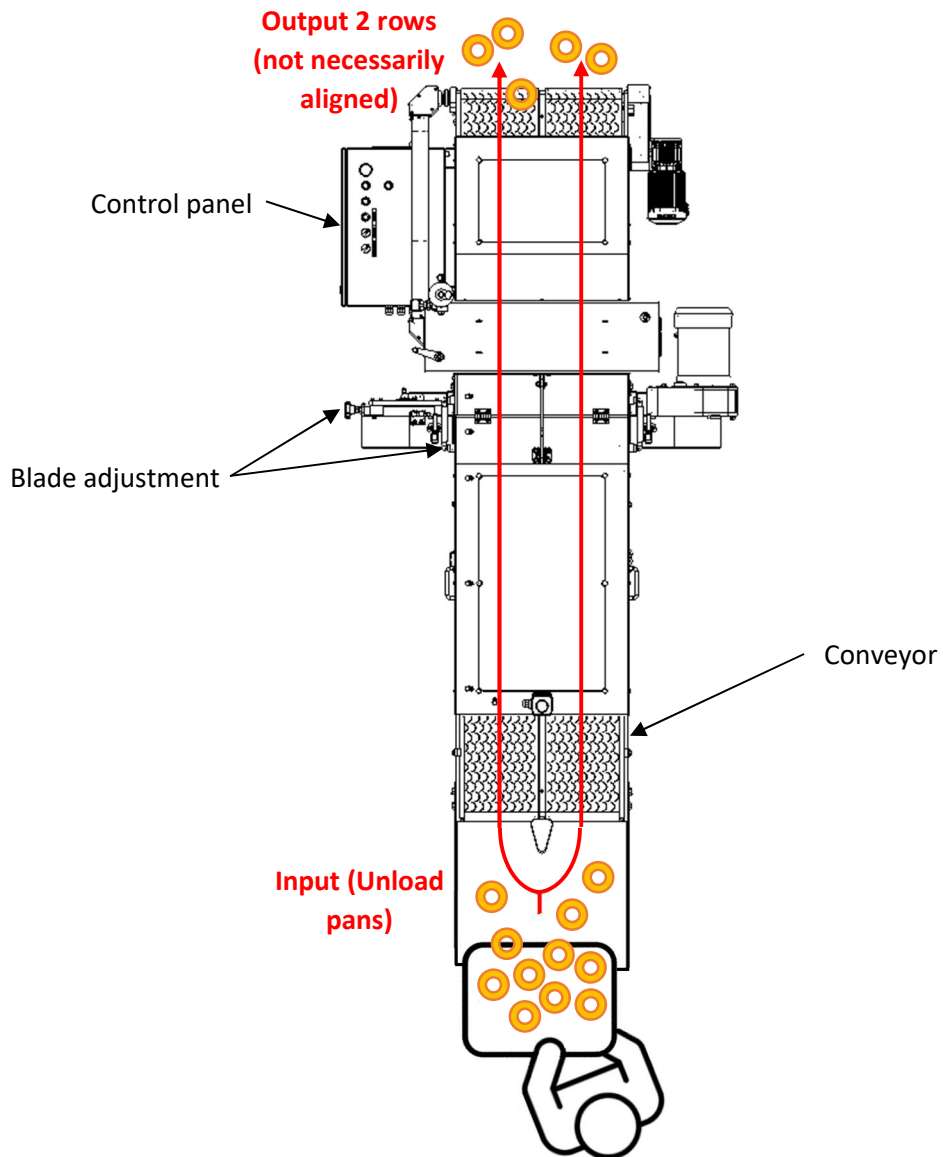
Standard: CE





### 3.2: Flow diagram

The horizontal slicer is available in one setup. Usually, the horizontal slicer is combined with a large output conveyor with a series of guides that will funnel the products into a single row.



### 3.3: Range of applications intended use and general functions

The horizontal slicer is designed to compress and slice horizontally the products automatically without laying a chunk not sliced. Here are some features:

- Designed to process up to 50 sliced product per minutes.
- Cutting height is adjustable.
- Middle blade guide avoids blade deflexion during process.
- Crescent top belt greatly improve lateral grip.
- Electrical break to maximize blade deceleration.
- A sensor will detect a broken blade and will stop automatically the motor.
- Made of stainless steel 304 and anodize aluminum.

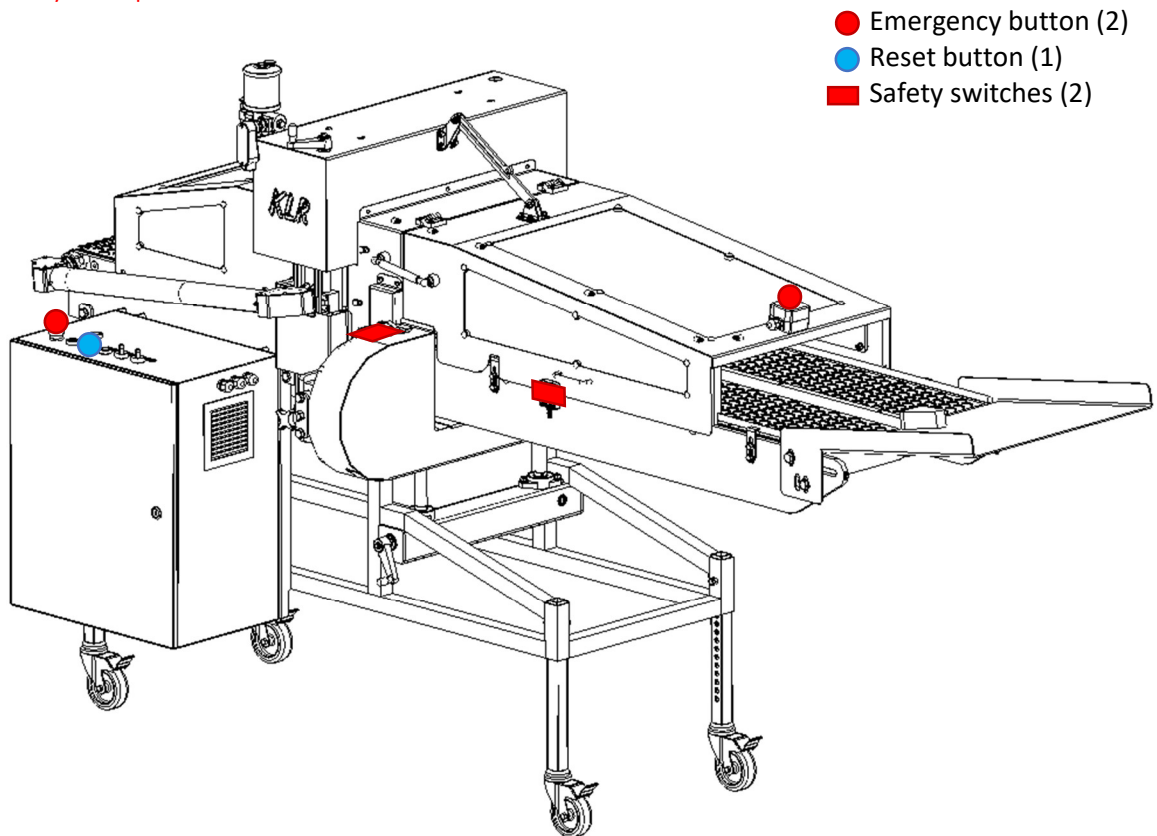
### 3.4: Dimensions (for transport)

Height: 60 inches

Length: 112 inches

Width: 53 inches

### 3.5: Safety components



### 3.6: Specification for electricity and air

This machine comes in two electrical configurations, is intended to use these specifications. Always refer to the project electrical drawing:

European standard: 230/400 VAC – 14.2 A (connected load with additional drive) – 3 PHASES – 50 HZ

North America standard: 220 VAC – 8 A (connected load) – 3 PHASES – 60 HZ

Pneumatic need: None

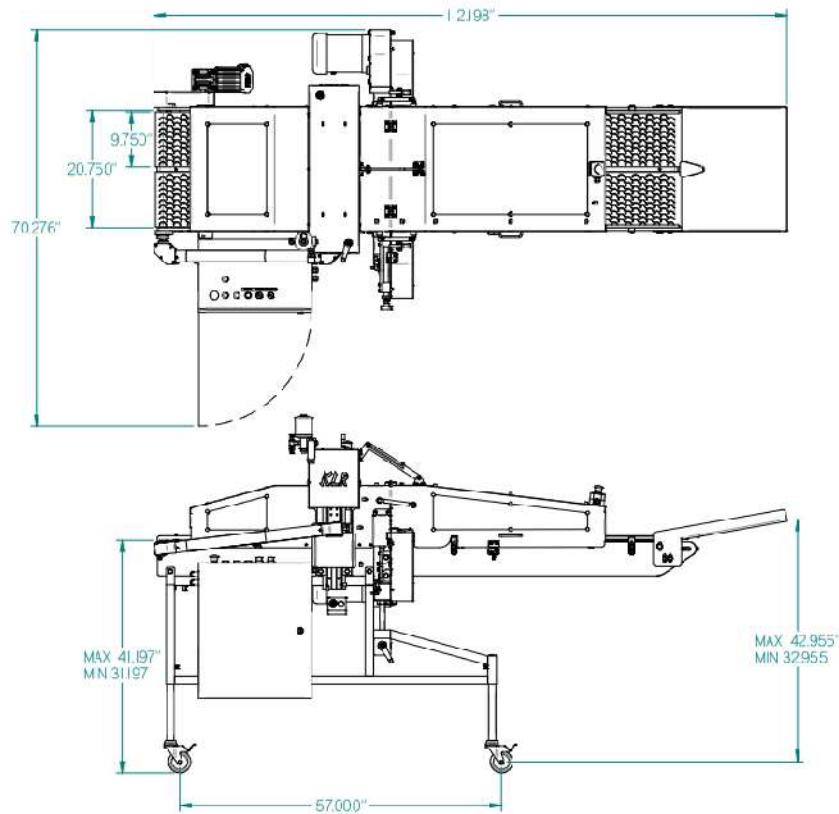
### 3.7: Blade specification

KLR systems are providing a blade with the machine. We also sell replacing blades for your needs as a part order. KLR is not responsible for the compatibility if you decide to buy blades from another provider.

## 4.0: INSTALLATION

### 4.1: Minimal Space Required

Before installation, make sure there is enough footprint available to fit the equipment. Here is the minimal space required to install it:

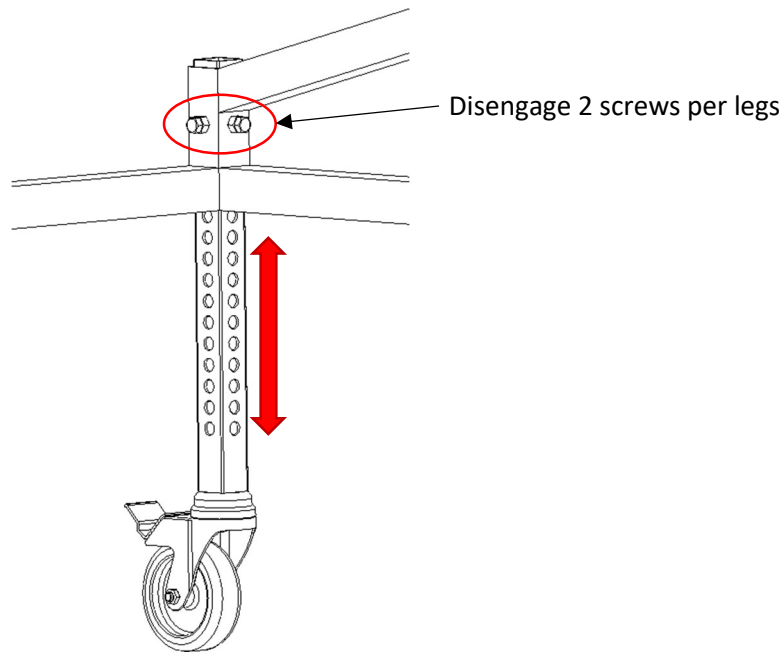


### 4.2: Procedure for unpacking

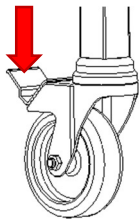
1. Remove all red marked screws from the wood box (if crated). Cut all the straps from the pallette (if Machine have wheels). Remove all screws from the legs.
2. To remove it from the pallette / crate, use a forklift gently lift the machine from underneath the frame, use protective pad to avoid any damage. Always test if the machine is stable on the forks.
3. Move back with the forklift drop the machine as low as possible as soon you are out from the wood box / pallette.
4. Move the machine to the proper location using the built-in wheels or with the forklift.

### 4.3: positioning and leveling

1. Locate and position the machine where desired.
2. Make sure the machine weight is well supported, then adjust the height by changing position of the screws on each legs. If the machine has legs instead of wheel, loosen the nut and simply adjust the threaded leg to the right height.





3. Check if the machine is leveled.
4. Secure the position by using the lock mechanism on each wheel. If the machine has legs instead of wheels, secure the nut.



5. An electrician can now wire the machine. Since the machine may be on wheels, it is recommended to use a twist plug according to the power demand.

## 5.0: OPERATION

	<p>➤ Before using the machine, it is important that every operator of the machine and maintenance personnel take part in a training session given by KLR systems technicians.</p>
 <b>CAUTION</b>	<p>➤ ALWAYS turn OFF and use a PAD LOCK DEVICE on the main power shut off before any maintenance procedures, cleaning, removing a jam or any other tasks that could hurt the user if the machine start promptly.</p>

### 5.1: Control

On top of the control panel, there is most of the control. All control and emergency button must be clear and accessible at all time.

Emergency      Fault state      Reset button      Power ON      Conveyor ON      Slicer ON



#### 5.1.1: Emergency button

Emergency is pressed to stop the machine as fast as possible. To reset the machine, turn the emergency button to the left. Then press the reset button;

#### 5.1.2: Fault state light

Fault will appear when an emergency is pressed or alternate to a safety switch is open. That means every door, safety guard must be correctly close and reset button in order to operate the machine.

#### 5.1.3: Power ON state light

Shows the machine is energized. Make sure that light is OFF when performing any type of maintenance or cleaning.

#### 5.1.4: Conveyor ON/OFF:

To turn ON the conveyor, the slicer must be ON as well. But if you do not want sliced products, you will have to remove the blades or do the proper setup (see further in the document)

#### 5.1.5: Slicer ON/OFF

To turn ON or OFF the blade motor

## 5.2: Cut adjustment overview

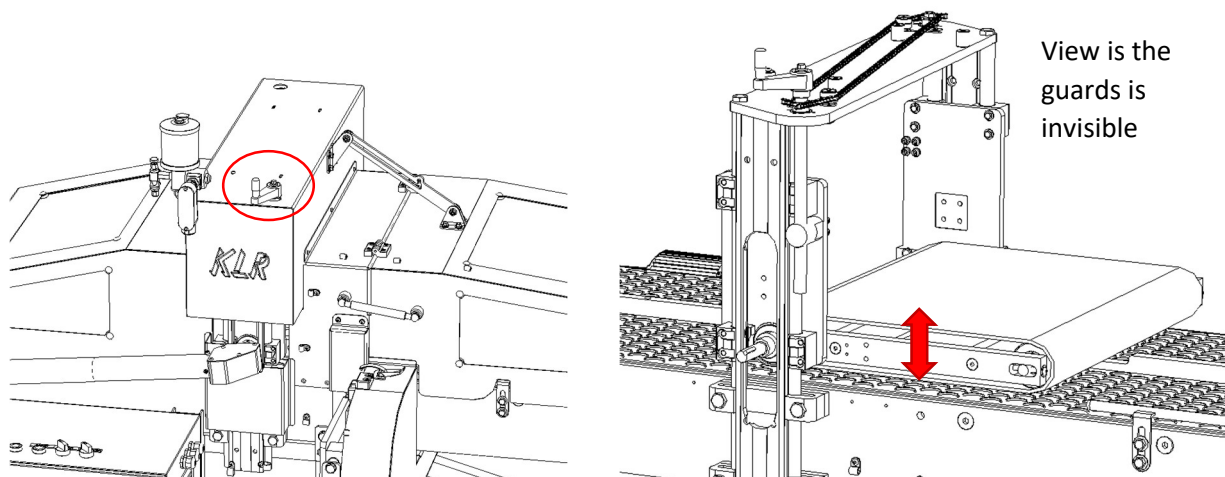


# CAUTION

- MAKE SURE to NOT adjust the blade too close to the belts to avoid damaging it. Follow step by step guide in 5.3.

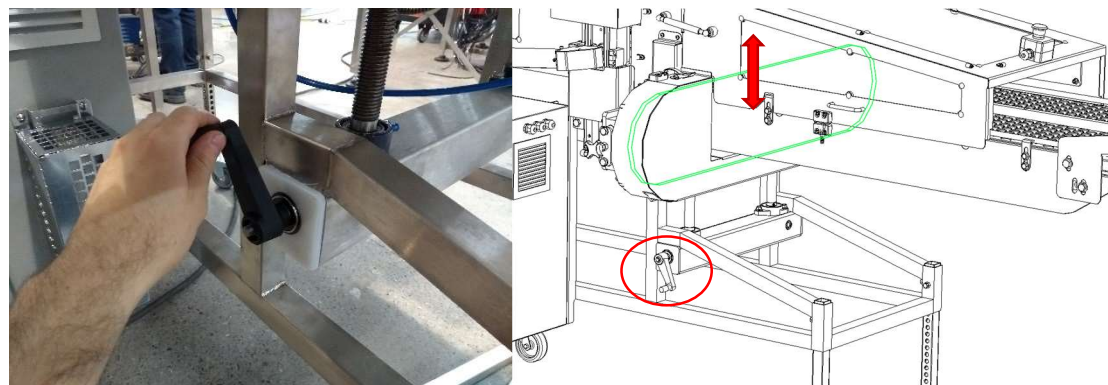
### 5.2.1. Compression Belt Setup overview

Note: Blade setup and compression belt setups are done in the same time. Compression belt is necessary to keep the product engage in the blade. We suggest trying with few products before production just to make sure. Turn the top crank clockwise to raise the compression belt.



### 5.2.1: Blade setup overview

Blade setup and compression belt setups are done in the same time. To rise and lower the blade, turn the crank clockwise gently (fine tune) to raise the blade. Pass a product to see if it reaches your criteria. In the second picture, the blade is in green.





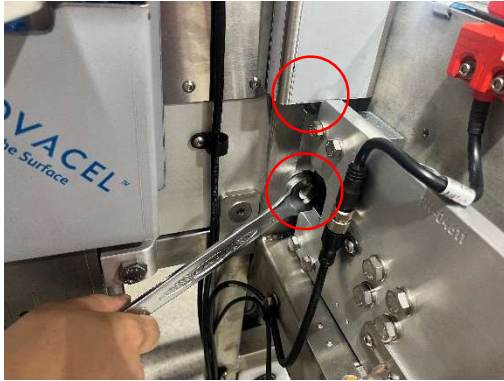
### 5.3: Step-by-step blade adjustment



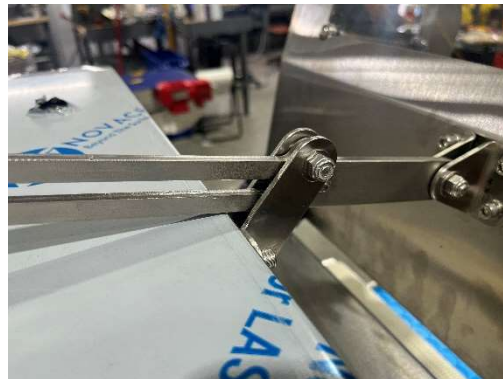
## CAUTION

- MAKE SURE to NOT adjust the blade too close to the belts to avoid damaging it.

1. Loosen 2 screws



2. Open the infeed door to have better view. Make sure the locking mechanism is well engaged.



3. Place a product on the belt to figure where the cut needs to be. Make sure the blade won't touch either belt to avoid equipment damage.





4. Close the door, reset the machine and pass the product through the machine. Keep an eye on the product during the process. if the product moves with the blade, it needs to be a bit more compressed. Inspect the cut if it meets the measurement requirements and fine tune if necessary.



5. Tight the 2 screws back to secure the height adjustment



#### 5.4: Not sliced product setup

It is possible to run the conveyor and not slice the products, you can either do:

- Remove the blade, then run normally.
- Or
- set up the compression belts and the blade high enough to let the product pass underneath.

## 5.5. Start the slicer

To start the bagger:



1. Close all doors correctly.
2. Make sure both emergency button is pulled up.
3. Press the reset button.
4. Switch Slicer ON.
5. Switch Conveyor ON.



## 5.6: Safety switch status

LED status	Description
Steady red	That door is open
Flashing green	A door from the same zone is open
Steady green	All doors close, all circuit satisfied

## 6.0: MAINTENANCE AND CLEANING

	<p>➤ Before using the machine, it is important that every operator of the machine and maintenance personnel take part in a training session given by KLR systems technicians.</p>
 <b>CAUTION</b>	<p>➤ ALWAYS turn OFF and use a PAD LOCK DEVICE on the main power shut off before any maintenance procedures, cleaning, removing a jam or any other tasks that could hurt the user if the machine start promptly.</p>

### 6.1: Preventive maintenance schedule

Here is a quick way to take care of your machine by a preventive maintenance schedule. Due to the complexity of our machine, take note that these procedures are only advice and are subject to change. These time intervals will change according to the usage of the machine:

PREVENTIVE MAINTENANCE SCHEDULE			
Location	Procedure	Time interval	Remarks
Blade	Replace blade	When broken blade when sliced products shows unclear cut	Always wear cut-resistant gloves.
Oil canister	Check the oil level, add oil if needed	Daily	None
Conveyor belts	Visual inspection.	3 months	None
Chain conveyor	Verify tension and check if it is clean	3 months	None
Gear boxes	Make sure grease inside is clean inside.	3 months	None
Safety	Verify safety devices	1 months	None
Door piston	Verify leakage	3 months	Change if there is a leak to prevent injury
Cleaning	Air blow and spray with Alco spray®	daily	always turn the power supply OFF

## 6.2: Maintenance steps

### 6.2.1: Blade replacement

1. Turn the machine OFF and put a pad lock;
2. Wear cut-resistant gloves;
3. Open the safety guard;



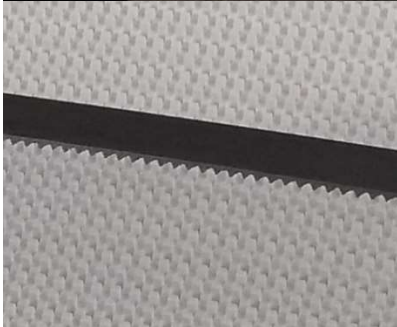
4. Remove the tension of the blade and remove the blade;



5. Take the blade out the package, unfold it carefully because it can act like a spring;



6. Insert the blade this side;



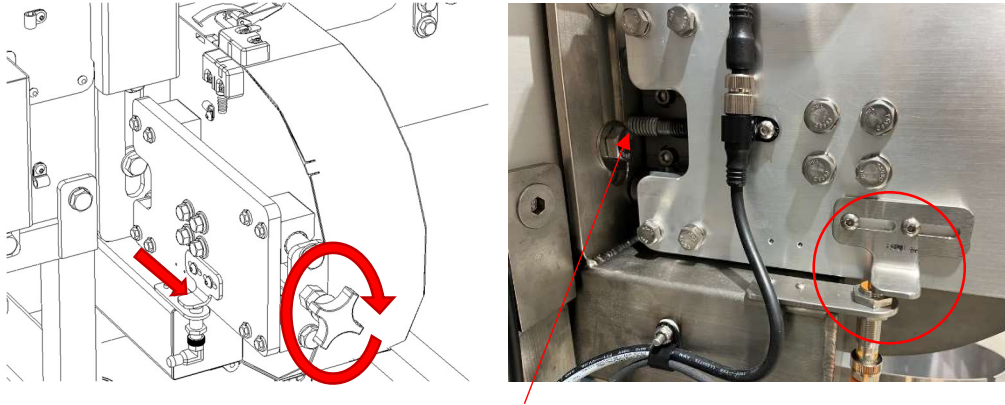
7. The road of the blade between each guide set and we'll sit on the pulleys;



The blade runs on the side of the bearing, NOT under, these bearings give the proper support during the cut



Apply tension to the blade until the plate is aligned with the sensor. If the blade breaks, the spring will cause the plate to disengage from the sensor. Ensure that the plate is positioned more toward the outside, reducing movement and enabling the motor to stop more quickly.



Make sure the spring isn't bottoming out

8. Close the safety door.

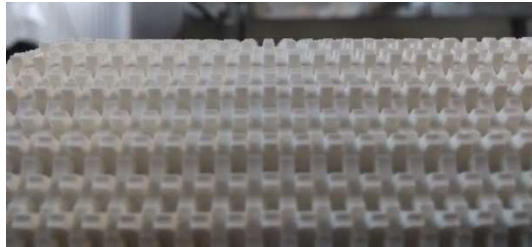


### 6.2.2: Oil canister

Check daily if the oil canister needs to be filled. Fill it when needed.

### 6.2.4: Conveyor Belts

Do a visual inspection on each belt, rubber texture will be flat when it is completely worn. A new belt looks like this:



To replace it:

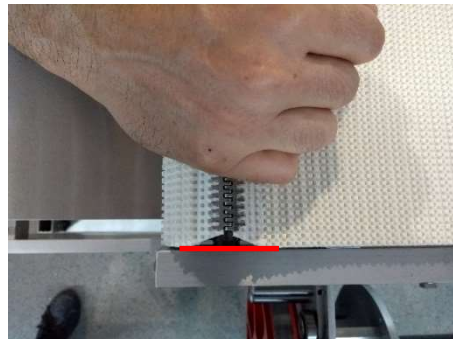
1. Remove the belt tension.



2. Pull out the union rod and remove the belt.
3. Prepare the new belt with the union rod.



4. Align the alligator union. It must be aligned correctly on the side.



5. Insert the rod.



6. Cut the acceding of the rod.
7. Apply tension on the belt. It is recommended to tight it alternately. You can help yourself by measuring each side to be sure to be equal. DO NOT over tight, this is a post tension.



8. Start the conveyor and check to be sure the belt is tracked in the middle, you might end up with a side tighter than the other. Please, keep the same tension, a good way is: for example, if you need to tight  $\frac{1}{2}$  rotation on the right side to help the belt reach the center, then split the value in two and you will only screw the right side  $\frac{1}{4}$  rotation and unscrew the left side  $\frac{1}{4}$  rotation.

#### 6.5.5: Chain

1. Turn the machine OFF and put a pad lock;
2. Remove the safety guard of the chain;
3. Make sure it's clean, get rid of the dust if needed;
4. Check the tension. According to the manufacturer, you shouldn't be able to move by hand the chain up and down more than the thickness.

#### 6.5.6: Gear boxes

1. Remove 4 screws on top of the gear box and remove the plate.
2. Check if it still completely full of clean grease. Make sure there are no metal particles in the grease either.
3. Put the plate back on.
4. Repeat these three steps for the other one.




### 6.5.7: Safety

1. Make sure every safety panel is well in place, doors are closing properly, and the machine stop when the doors are opened.
2. Test emergency buttons, buttons must not be hard to push.

### 6.5.8: Pistons

Make sure there is no leakage on both pistons. A leak means it needs to be replaced.

### 6.3: Cleaning

 <b>SHARP</b>	➤ The blade is extremely sharp, always wear cut-resistant glove and use extra precaution when working near the blade. Remove the blade prior cleaning to insure safer environment.
--	--

Cleaning is very important. It is part of the maintenance because it helps the machine work well and last longer. We do recommend cleaning every working day.

#### 6.3.1: Cleaning interior

1. Open the doors to get access.
2. Use air blowers to get rid of the dust.
3. Spray a sanitizer on the belts that dry by itself and does not need to be wiped off because of the texture.

#### 6.3.2: Cleaning the blade compartment

1. Open the blade compartment.
2. Remove the blade.
3. Carefully wipe from the back of the blade with a clean cloth soaked in sanitizer.
4. Blow with air guns on top and under the compartment.
5. Reinstall the blade by following the maintenance step correctly.
6. Test the machine.

## 7.0: MAINTENANCE AND REPARATIONS BY TECHNICIANS FROM KLR SYSTEMS INC.

### 7.1: Addresses and contact information for service technicians

KLR SYSTEMS INC.

944 Herons Street,

SAINT-PIE, QUÉBEC, CANADA

J0H 1W0

450-388-0404

### 7.2: Technical support

Email: [support@klrsystems.com](mailto:support@klrsystems.com)

Phone: 450-388-0404

### 7.3: Parts order

Email: [order@klrsystems.com](mailto:order@klrsystems.com)

Web site: [www.klrsystems.com](http://www.klrsystems.com)

## 8.0: LISTS OF SPARE PARTS AND CONSUMABLES

### Suggested spare part list per machine for KLR.2000

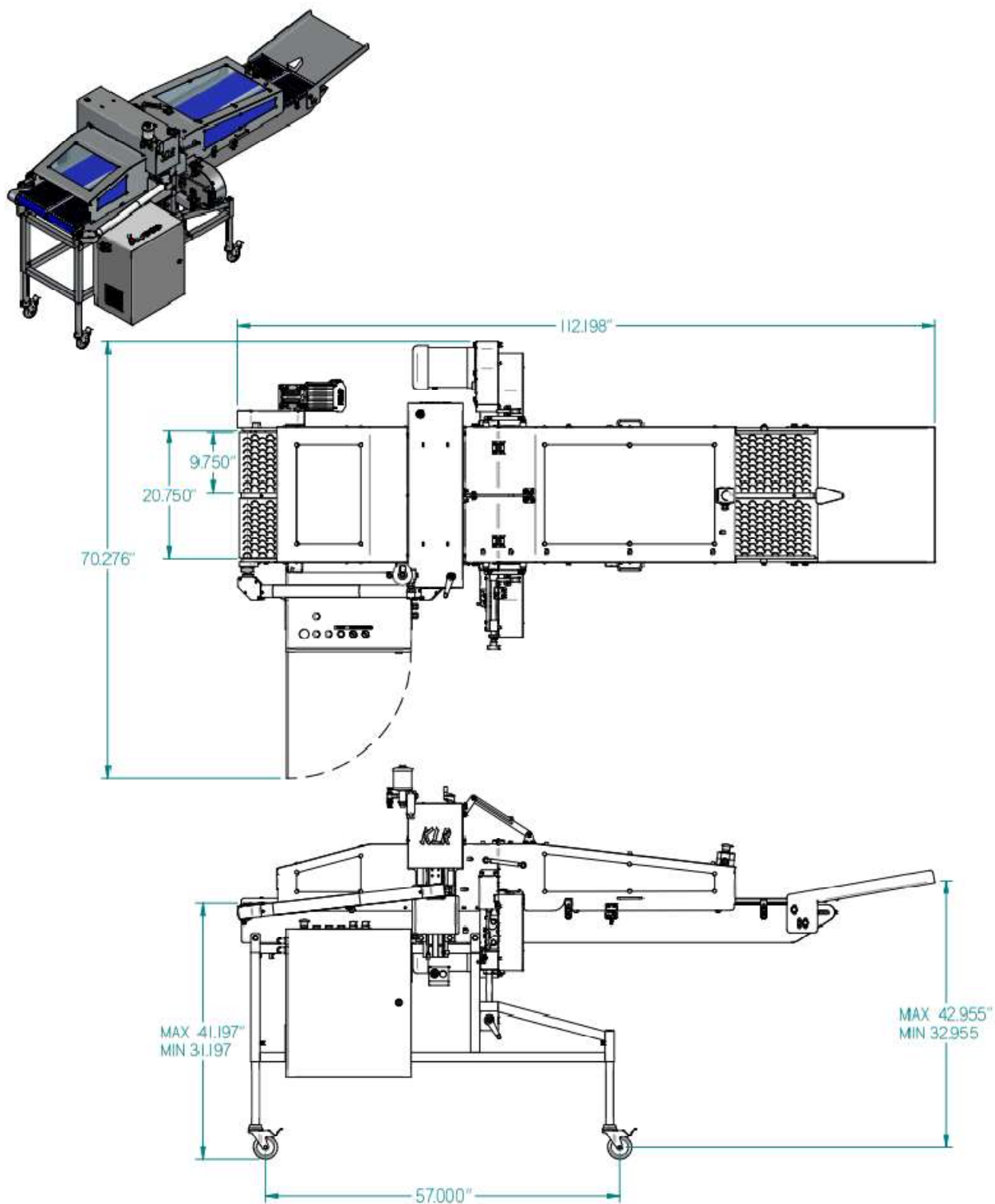
Numbers	Part numbers	Quantity	Descriptions
1	KR-02009	1	TRANSMISSION CHAIN
2	L-98V-1	2	BLADE
3	P02-00095	4	BEARING
4	P02-00133	6	BEARING
5	PB-00550-01	2	CONVEYOR BELT
6	PB-00137	1	CONVEYOR BELT
7	PE-00538	1	MAGNET SAFETY SWITCH
8	PE-00259-L	1	MOTOR
9	PE-00272	1	MOTOR
10	PM-00056	1	TIMING BELT
11	PM-00140	2	HINGE
12	PM-00454-A	1	GAS CYLINDER 15 LBS
13	PM-01541	1	BEARING 1"
14	PM-02133	3	BEARING SPECIAL WITH SET SCREW
15	PM-04000	2	METAL MITER GEAR
16	PR-03450	1	ROD ALIGNMENT GUIDE
17	SSB40-14KK	1	SPROCKET 14 TEETH
18	SSB40-14QK	1	SPROCKET 14 TEETH

## 9.0: DECOMMISSIONING OF THE PRODUCT

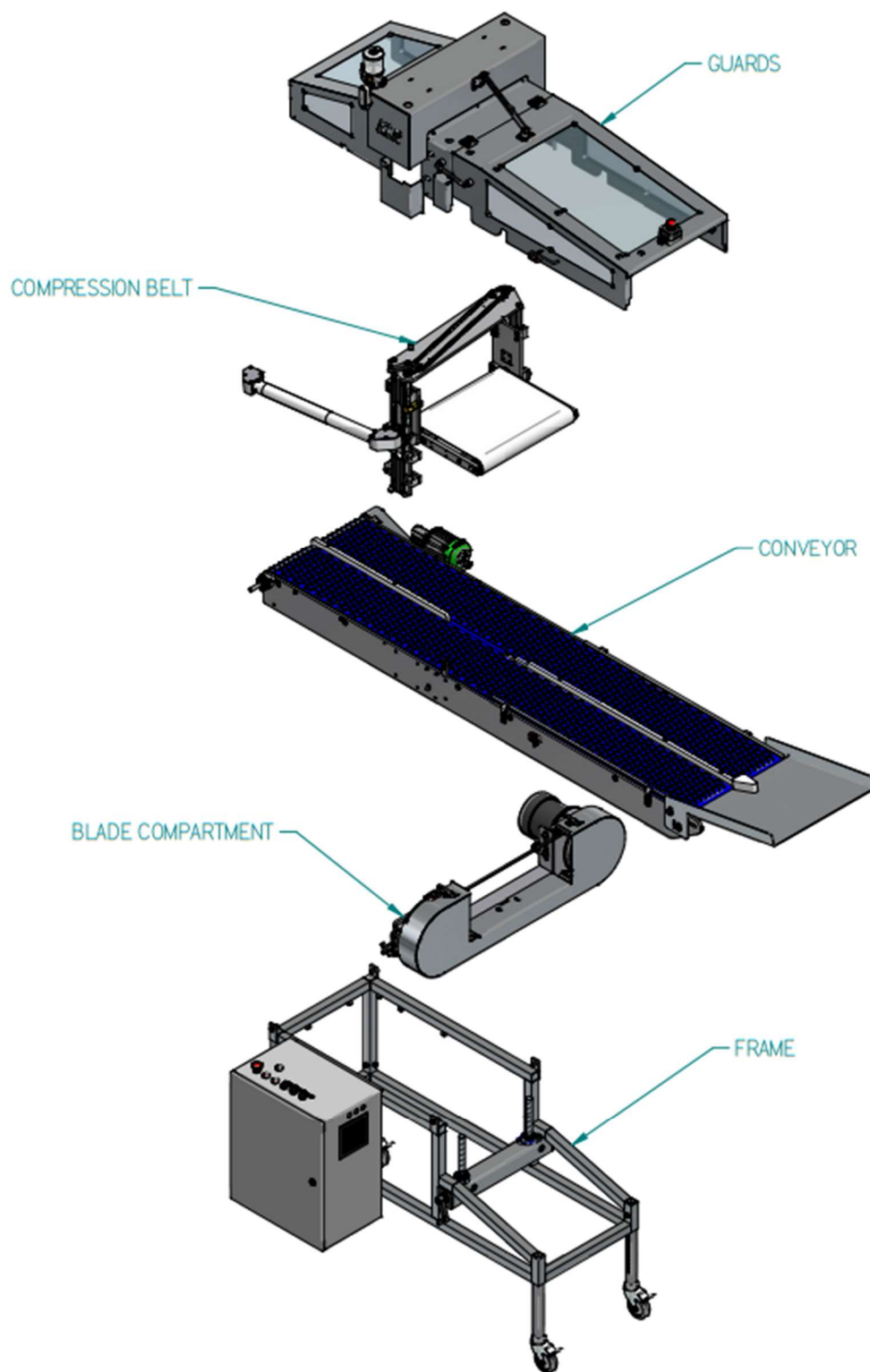
It is advisable to plan a tour of KLR to reinstall the equipment after a prolonged deactivation or a move, destruction, recycling, disposal.

## 10.0: EXPLODED VIEWS

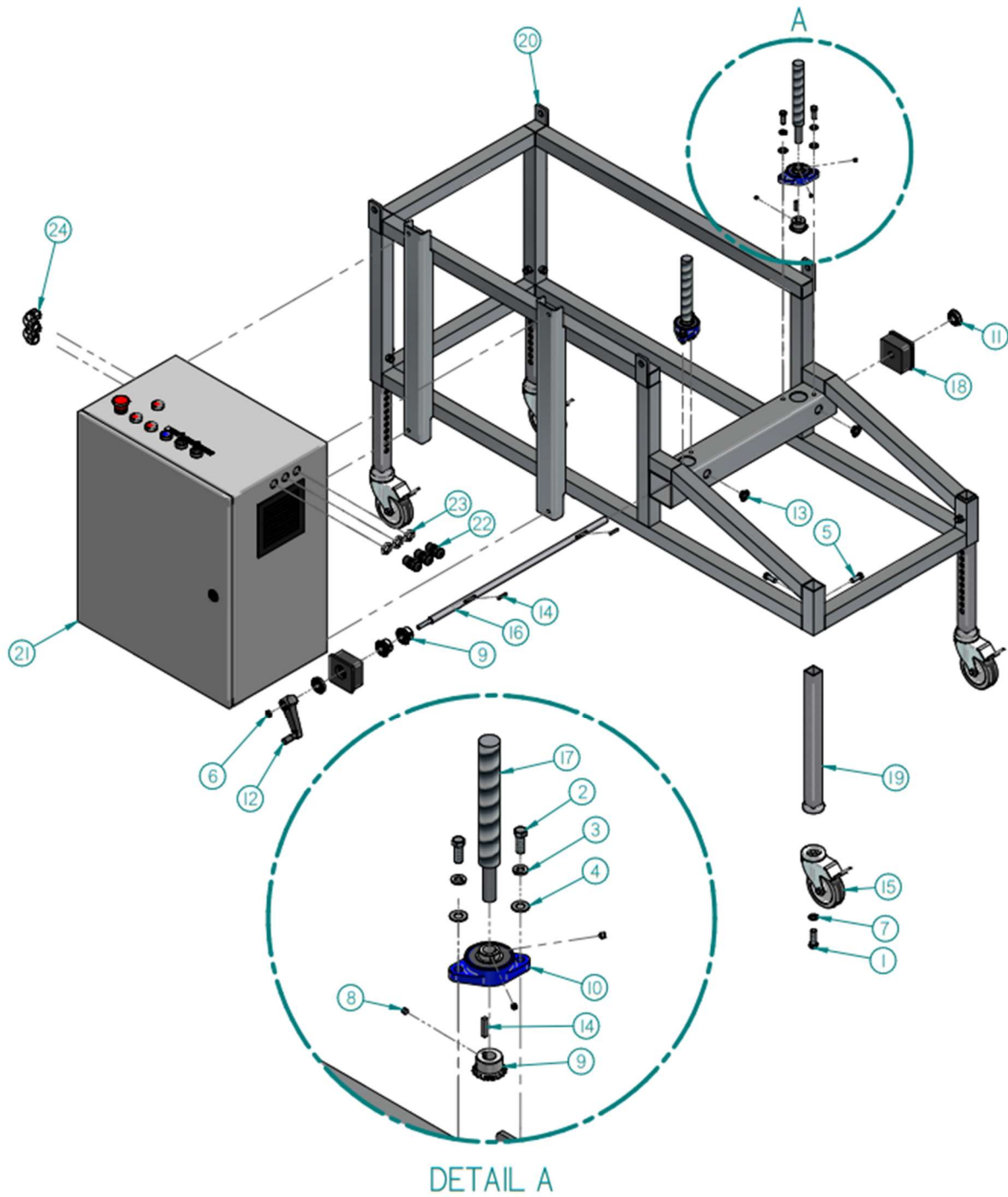
### 10.1: KLR.2000



## 10.2: MAIN ASSEMBLY



### 10.3: FRAME

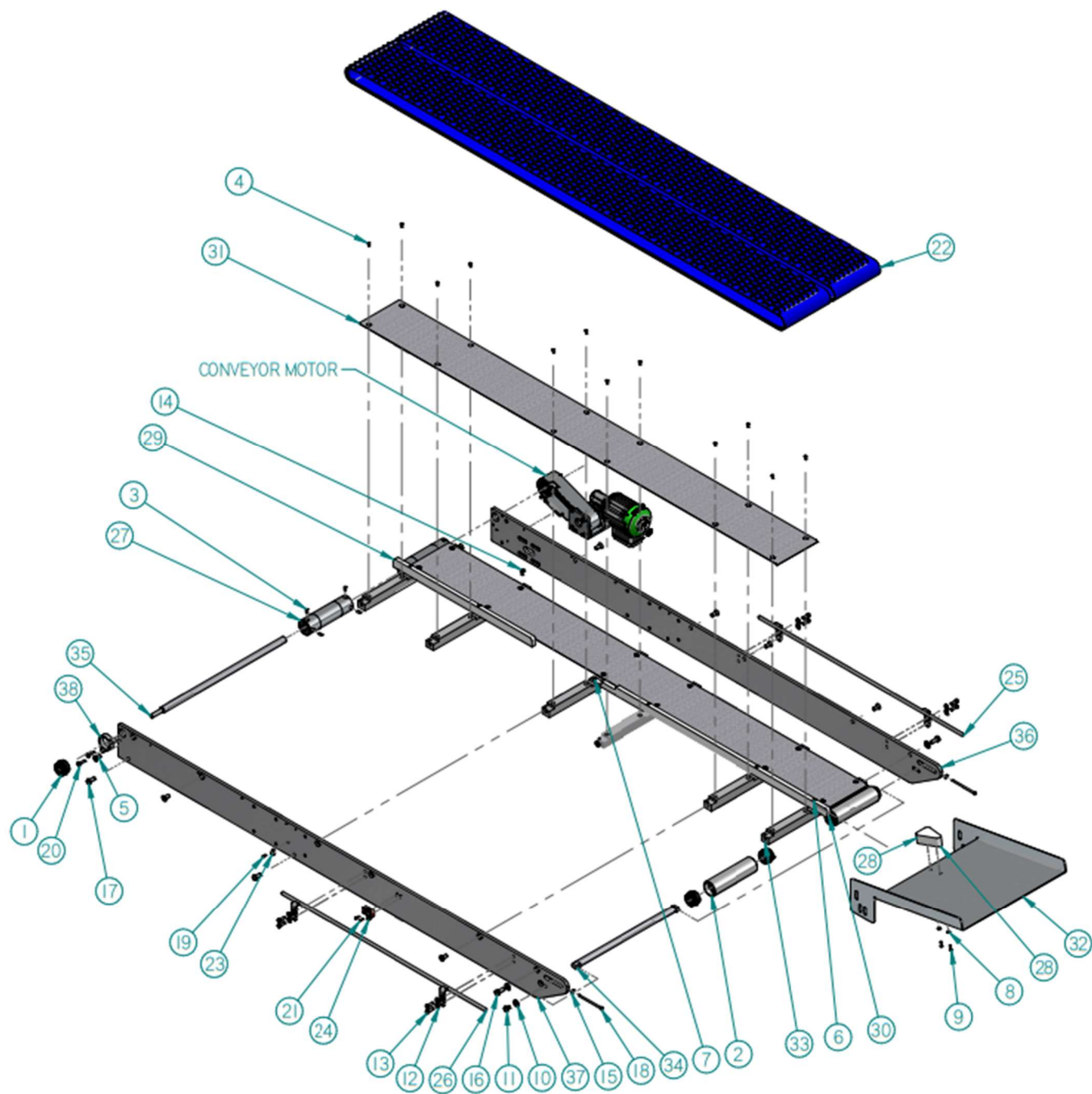


## 10.3.1: FRAME PART LIST

FRAME			
No.	Part number	Qty	Title
1	F13-500C24S	4	HEX HEAD 1/2-13 X 1 1/2" STAINLESS
2	F13-375C16	4	HEX HEAD 3/8-16 X 1" ZINC
3	F02-375	4	LOCK WASHER 3/8" ZINC
4	F01-375	4	FLAT WASHER 3/8" ZINC
5	F13-375C16S	8	HEX HEAD 3/8-16 X 1" STAINLESS
6	F03-375FS	1	NUT HEX 3/8-24 STAINLESS
7	F02-500S	4	LOCK WASHER 1/2" STAINLESS
8	F06-250F04	8	SET SCREW 1/4-20 X 1/4" ZINC
9	PM-04000	4	METAL MITER GEAR
10	PM-01510	2	TWO BOLT FLANGE BEARING
11	P02-00133	2	BEARING
12	PM-00159	1	HANDLE
13	PM-02120-I	2	BOUCHON DE PLASTIQUES 1/2"
14	PM-01416	4	MACHINE KEY 3/16"
15	PM-00009	4	SWIVEL WHEEL CASTER WITH LOCKING SYSTEM - GALVANIZED
16	PR-04667	1	SHAFT
17	PR-04666	2	ADJUSTMENT SCREW
18	PR-04669	2	END CAP
19	PR-00967-S	4	LEG
20	PR-04630-01	1	FRAME ASSEMBLY
21	PC-2000	1	CONTROL PANEL FOR KLR.2000
22	PE-00105	3	ELECTRICAL SQUEEZE FOR CÂBLE 1/2" X 1/2 NPT
23	PE-00106	3	LOCK NUT 1/2"
24	PE-00116-A	2	CONNECTOR 3/8" - 90 DEGRÉES



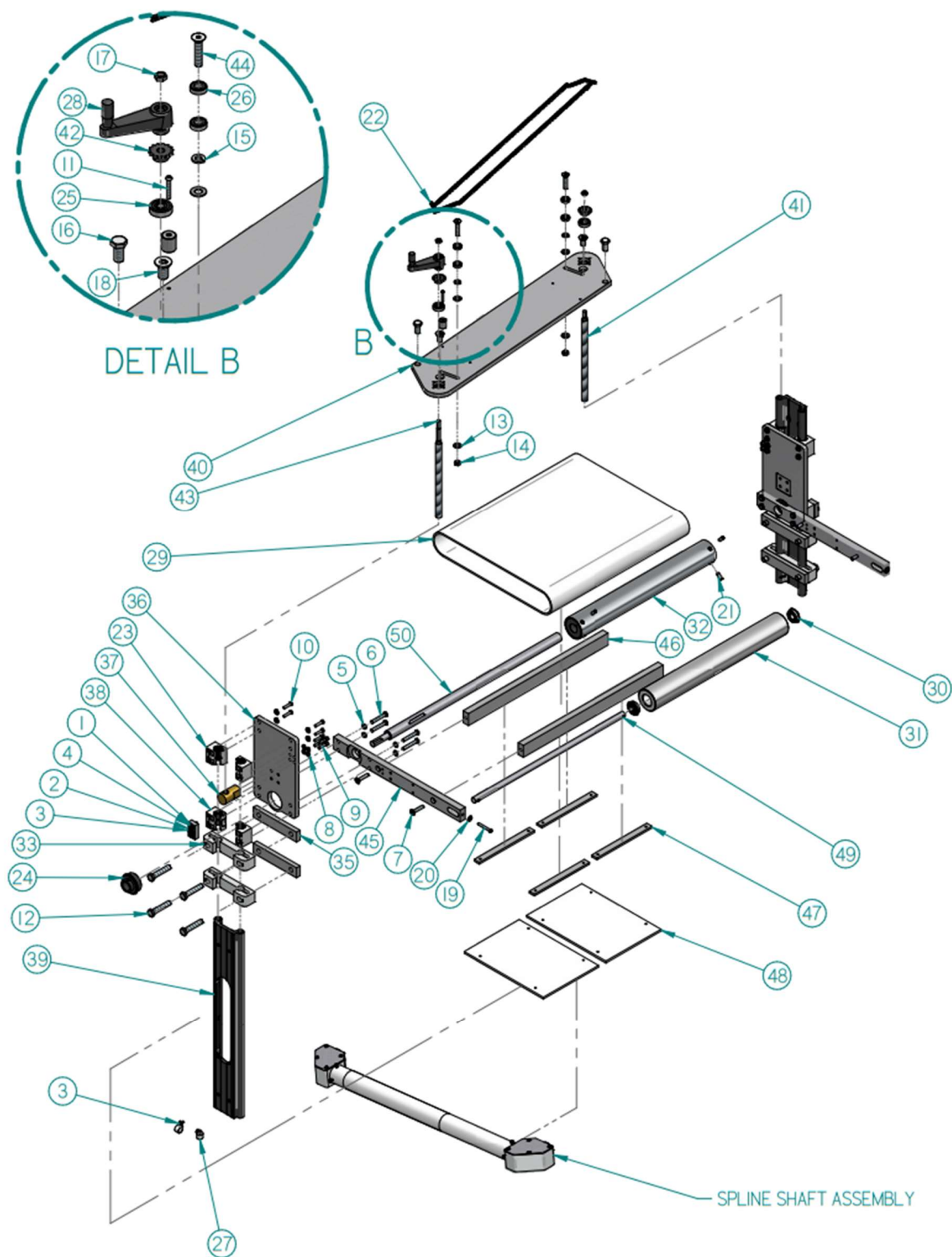
## 10.4: CONVEYOR





## 10.4.1: CONVEYOR PART LIST

CONVEYOR			
No.	Part number	Qty	Title
1	PM-01541	5	BEARING 1"
2	PR-04602-09	2	IDLER ROLLER
3	F06-312C10	8	SET SCREW 5/16-18 X 5/8" STEEL
4	F12-190F08S	24	FLAT HEAD 10-32 X 1/2" STAINLESS
5	F12-500C16	9	FLAT HEAD 1/2-13 x 1" ZINC
6	F11-190F32S	5	BUTTON HEAD 10-32 X 2" STAINLESS
7	F11-190F16S	1	BUTTON HEAD 10-32 X 1" STAINLESS
8	F02-250S	2	LOCK WASHER #14 STAINLESS
9	F11-250C12S	2	BUTTON HEAD 1/4-20 X 3/4" STAINLESS
10	F01-500S	4	FLAT WASHER 1/2" STAINLESS
11	F13-500C08S	2	HEX. HEAD 1/2-13 x 1/2" STAINLESS
12	F01-375S	8	FLAT WASHER 3/8" STAINLESS
13	F13-375C16S	8	HEX HEAD 3/8-16 X 1" STAINLESS
14	F10-250C12S	3	SOCKET CAP 1/4-20 X 3/4" STAINLESS
15	F01-250S	5	FLAT WASHER 1/4 STAINLESS
16	F13-500C20S	2	HEX HEAD 1/2-13 X 1 1/4 STAINLESS
17	F13-500C16S	4	HEX. HEAD 1/2-13 x 1" STAINLESS
18	F13-250C76	2	HEX HEAD 1/4-20 X 2" ZINC
19	F11-190F06S	1	BUTTON HEAD 10-32 x 3/8 STAINLESS
20	F12-312C20S	2	FLAT HEAD 5/16-18 X 1 1/4 STAINLESS
21	F10-164C08S	2	SOCKET CAP 8-32 X 1/2" STAINLESS
22	PB-00550-01	2	URETHANE CRESCENT BLUE V-BELT 9-5/8" WIDE
23	PE-01004	1	NYLON CABLE CLIP 5/16
24	PE-00538	1	SAFETY SWITCH
25	PR-01195-1-R	1	RIGHT GUIDE
26	PR-01195-1-L	1	LEFT GUIDE
27	PR-03459-09	2	DRIVE ROLLER
28	PR-10232	1	SPLITTER
29	PR-10231	1	CENTER GUIDE
30	PR-10230	1	CENTER GUIDE
31	PR-01199-C	2	TOP PLATE CONVEYOR
32	PR-09840-01	1	START PLATE
33	PR-01009-09	6	CROSS SECTION
34	PR-04601-02	1	IDLER ROLLER SHAFT
35	PR-03159	1	SHAFT DRIVE DRUM (LOWER)
36	PR-04600-1R	1	RIGHT SIDE
37	PR-04600-1L	1	LEFT SIDE
38	PR-01184	1	HOLDER BEARING

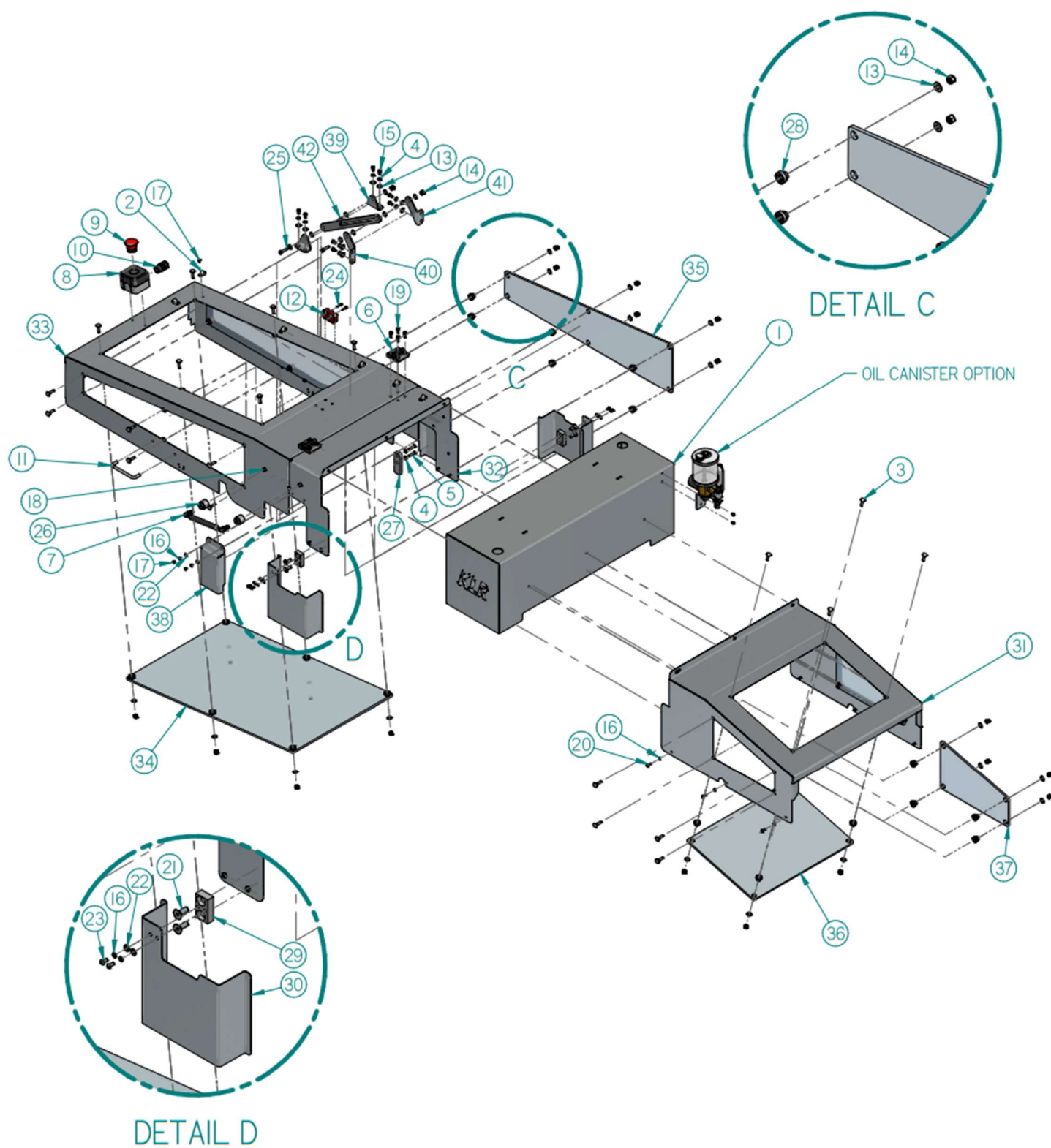
**10.5: COMPRESSION BELT**

## 10.5.1: COMPRESSION BELT PART LIST

COMPRESSION BELT			
No.	Part number	Qty	Title
1	F12-M8-1.25X20	4	FLAT HEAD M8-1.25 X 20 ZINC
2	F01-190S	4	FLAT WASHER #10 STAINLESS
3	F11-190F06S	6	BUTTON HEAD 10-32 x 3/8 STAINLESS
4	PR-09782	2	SPACER
5	F02-312S	16	LOCK WASHER 5/16" STAINLESS
6	F13-M8-1.25X50S	8	HEX. HEAD M8-1.25 X 50 STAINLESS
7	F12-312C24S	4	FLAT HEAD 5/16-18 X 1 1/2" STAINLESS
8	F02-250S	9	LOCK WASHER #14 STAINLESS
9	F10-250C16S	9	SOCKET CAP 1/4-20 X 1" STAINLESS
10	F13-M8-1.25X16S	8	HEX. HEAD M8-1.25 X 25 X 1" STAINLESS
11	F11-190F20S	1	BUTTON HEAD 10-32 X 1 1/4" STAINLESS
12	F13-500C40	8	HEX HEAD 1/2-13 X 2 1/2" ZINC
13	F01-375	4	FLAT WASHER 3/8" ZINC
14	F03-375C	2	HEX NUT 3/8-16 ZINC
15	F02-375	2	LOCK WASHER 3/8" ZINC
16	F13-500C16	2	HEX. HEAD 1/2-13 x 1" ZINC
17	F03-375FS	2	NUT HEX 3/8-24 STAINLESS
18	F12-500C16S-OBS	2	FLAT HEAD 1/2-13 x 1" STAINLESS
19	F11-250C28S	2	BUTTON HEAD 1/4-20 X 1 3/4" STAINLESS
20	F01-250S	2	FLAT WASHER 1/4 STAINLESS
21	F06-312C12	4	SET SCREW 5/16-18 X 3/4" STEEL
22	KR-02006	1	TRANSMISSION CHAIN
23	PM-00198	4	RAIL SUPPORT
24	PM-01541-SC	2	COLLAR BEARING WITH SET SCREW
25	PM-00106	2	BEARING
26	P02-00095	4	BEARING
27	PE-01006	2	NYLON CABLE CLIP 1/2
28	PR-01065-A	1	CRANK HANDLE
29	PB-00137	1	CONVEYOR BELT
30	PM-02133	2	BEARING
31	PR-04602	1	IDLER ROLLER
32	PR-03459	1	DRIVE ROLLER
33	PR-03442	4	RAIL SUPPORT
34*	PR-09784	1	TOP GUARD SPACER
35	PR-04643	4	SPACER FEEDER
36	PR-01186	2	MAST SUPPORT PLATE
37	PR-03450	2	ROD ALIGNMENT GUIDE
38	PR-04879	4	CARRIAGE IGUS 20MM
39	PR-08880	2	IGUS RAIL
40	PR-04668	1	TOP PLATE
41	PR-01191	1	ADJUSTMENT SCREW
42	PR-08950	2	SPROCKET 14 TEETH
43	PR-01190	1	ADJUSTMENT SCREW
44	PR-04674	2	SPECIAL BOLT
45	PR-04616	2	CONV SIDE FAME
46	PR-04605	2	SLICER BAR
47	PR-04658	4	BELT SPACER
48	PR-04613	2	BELT SLIDING PLATE
49	PR-04607	1	IDLER ROLLER SHAFT
50	PR-01187	1	SHAFT DRIVE DRUM (UPPER)



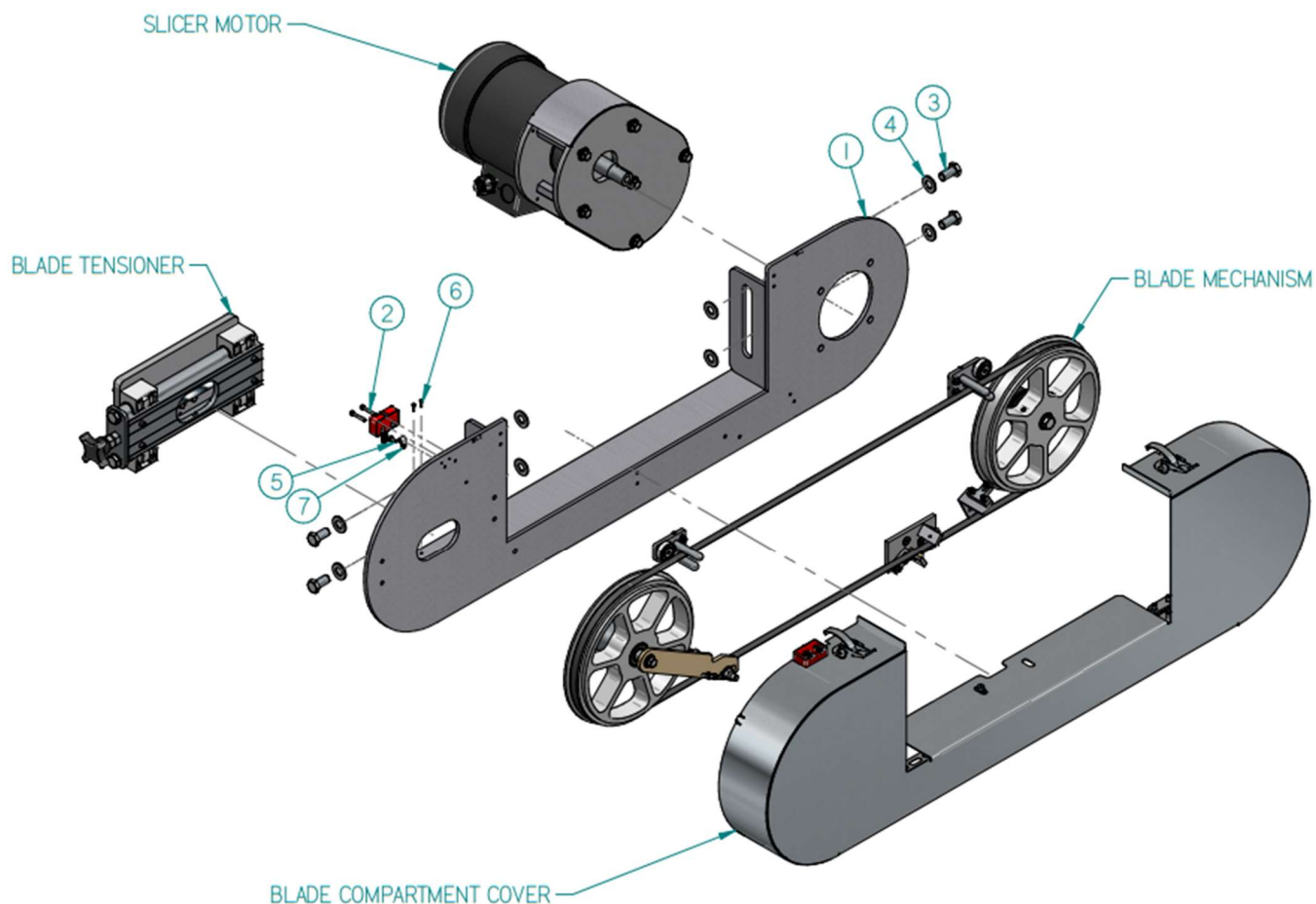
## 10.6: GUARDS



## 10.6.1: GUARDS PARL LIST

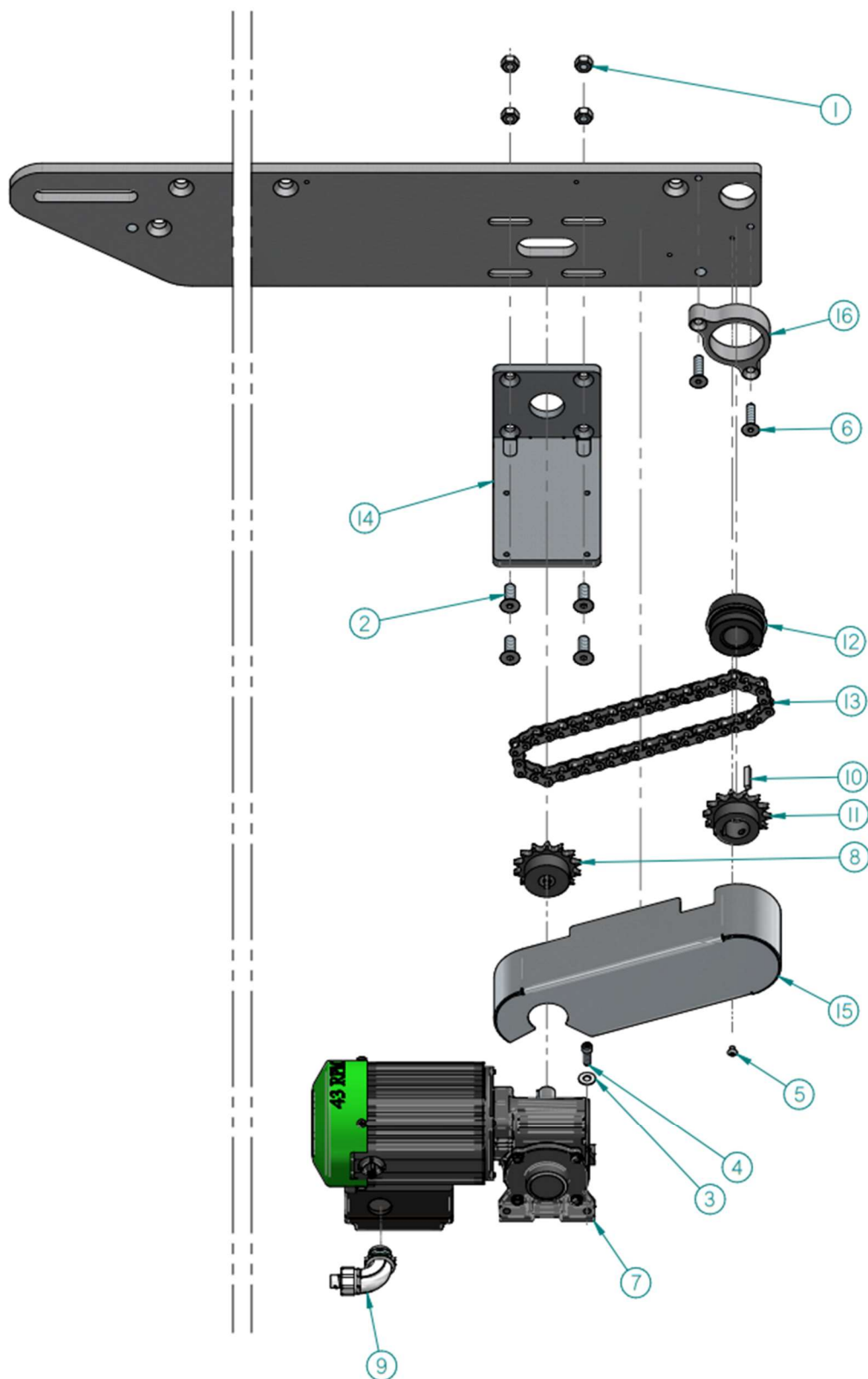
GUARDS			
No.	Part number	Qty	Title
1	PR-04672	1	TOP GUARD
2	PE-01004	8	NYLON CABLE CLIP 5/16
3	PM-04022	30	18-8 SS SQUARE-NECK CARRIAGE BOLT 1/4-20, 1 LONG
4	F02-250S	10	LOCK WASHER #14 STAINLESS
5	F11-250C16S	2	BUTTON HEAD 1/4-20 X 1" STAINLESS
6	PM-00140	2	HINGE
7	PM-00454	2	GAZ SPRING
8	PE-00148	1	EMERGENCY BUTTON
9	PE-00146	1	EMERGENCY BUTTON
10	PE-00105	1	ELECTRICAL SQUEEZE FOR CABLE 1/2" X 1/2 NPT
11	PM-00184	2	HANDLE
12	PE-00538-A	1	SAFETY SWITCH
13	F01-250S	46	FLAT WASHER 1/4 STAINLESS
14	F03-250CNS	32	NYLON LOCK NUT 1/4" STAINLESS
15	F13-250F06S	8	HEX HEAD 1/4-28 X 3/8 STAINLESS
16	F02-190S	24	LOCK WASHER #10 STAINLESS
17	F11-190F04S	20	BUTTON HEAD 10-32 x 1/4" STAINLESS
18	F13-375C08S	4	HEX HEAD 3/8-16 X 1/2" STAINLESS
19	F10-250F08S	8	SOCKET CAP 1/4-28 X 1/2" STAINLESS
20	F11-190F08S	10	BUTTON HEAD 10-32 X 1/2" STAINLESS
21	F12-M8-1.25X20	4	FLAT HEAD M8-1.25 X 20 ZINC
22	F01-190S	8	FLAT WASHER #10 STAINLESS
23	F11-190F06S	4	BUTTON HEAD 10-32 x 3/8 STAINLESS
24	F10-164C10S	2	SOCKET CAP 8-32 X 5/8" STAINLESS
25	F13-250C16S	2	HEX HEAD 1/4-20 X 1" STAINLESS
26	PR-04990-1	4	CYLINDER SUPPORT
27	PR-10235	1	BUTTÉE
28	PR-06756	30	THREADED SPACER
29	PR-09782	2	SPACER
30	PR-09783	2	FOLLOWER GUARD
31	PR-09773	1	FIXED GUARD
32	PR-09774-01	1	FIXED GUARD
33	PR-09775	1	SWIVELLING GUARD
34	PR-09777	1	TOP LEXAN OF SWIVELLING GUARD
35	PR-09778	2	SIDE LEXAN OF SWIVELLING GUARD
36	PR-09779	1	TOP LEXAN OF FIXED GUARD
37	PR-09780	2	SIDE LEXAN OF FIXED GUARD
38	PR-09781-01	2	LEFT SAW GUARD
39	PR-09785	2	BRACKET
40	PR-09786-R	1	RIGHT BRACKET
41	PR-09786-L	1	LEFT BRACKET
42	PR-09787	1	SWIVELLING GUARD HOLDER

## 10.7: BLADE COMPARTMENT



BLADE COMPARTMENT			
No.	Part number	Qty	Title
1	PR-04620	1	BLADE SUPPORT ASSEMBLY
2	F10-164C16S	2	SOCKET CAP 8-32 X 1" STAINLESS
3	F13-500C16	4	HEX. HEAD 1/2-13 x 1" ZINC
4	F01-500	8	FLAT WASHER 1/2" ZINC
5	F11-190F06S	1	BUTTON HEAD 10-32 x 3/8" STAINLESS
6	F10-112C06S	2	SOCKET CAP 4-40 X 3/8" STAINLESS
7	PE-01002	1	NYLON CABLE CLAMP

## 10.8: CONVEYOR MOTOR



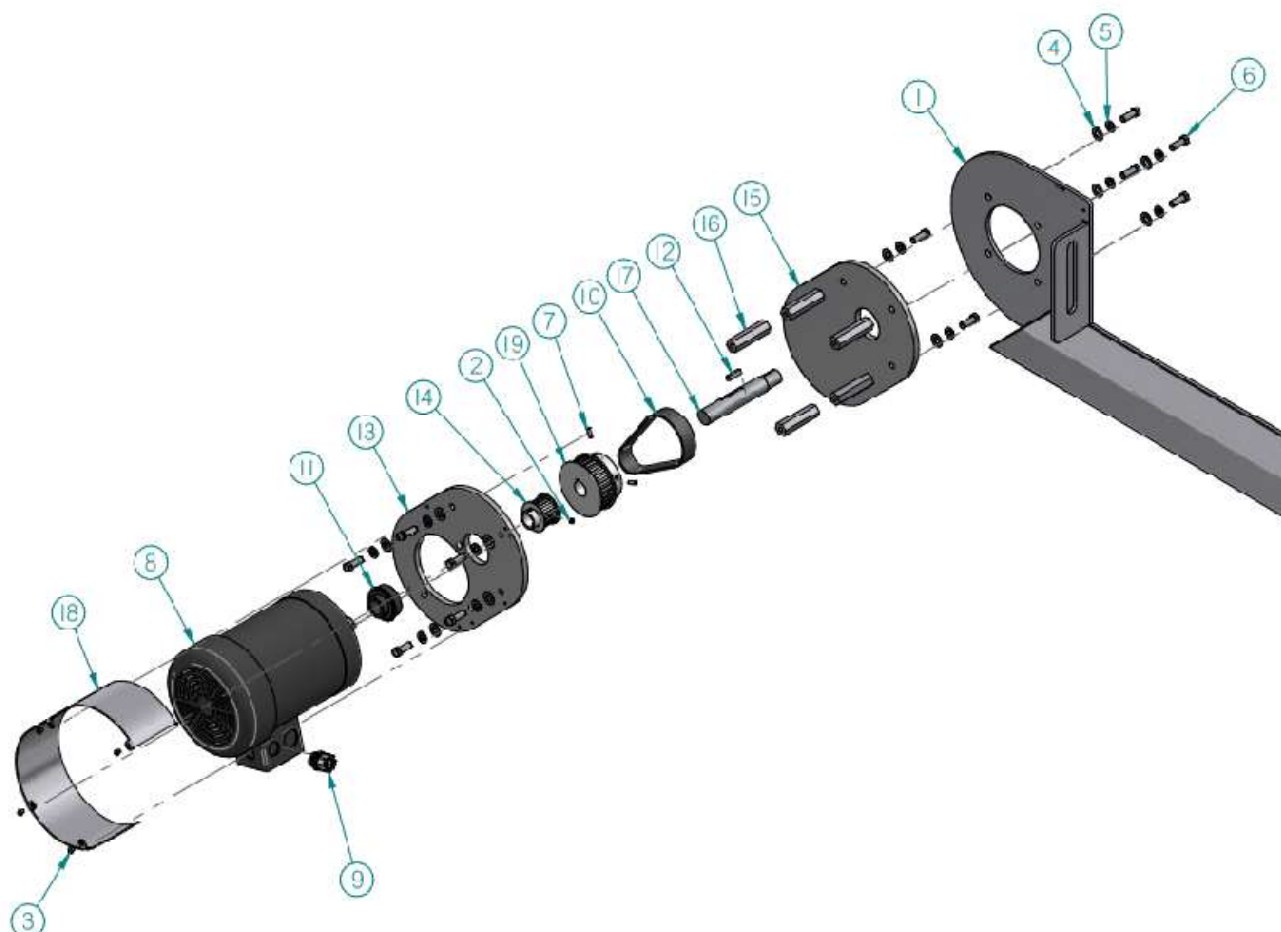


## 10.8.1: CONVEYOR MOTOR PART LIST

<b>CONVEYOR MOTOR</b>			
<b>No.</b>	<b>Part number</b>	<b>Qty</b>	<b>Title</b>
1	F03-375CS	4	NUT 3/8-16 STAINLESS
2	F12-375C16	4	FLAT HEAD 3/8-16 x 1" ZINC
3	F01-250S	1	FLAT WASHER 1/4 STAINLESS
4	F10-250C12S	1	SOCKET CAP 1/4-20 X 3/4" STAINLESS
5	F11-190F04S	1	BUTTON HEAD 10-32 x 1/4" STAINLESS
6	F12-312C20S	2	FLAT HEAD 5/16-18 X 1 1/4 STAINLESS
7	PE-00259-L-ASS	1	MOTOR
8	SSB40-14KK	1	SPROCKET 14 TEETH
9	PE-00116-A	1	CONNECTOR 3/8" - 90 DEGRÉES
10	PM-01416	1	MACHINE KEY 3/16"
11	SSB40-14QK	1	SPROCKET 14 TEETH
12	PM-01541	1	BEARING 1"
13	KR-02009	1	POWER TRANSMISSION CHAIN
14	PR-03543	1	MOTOR SUPPORT
15	PR-03486-B	1	MOTOR GEAR COVER
16	PR-01184	1	HOLDER BEARING

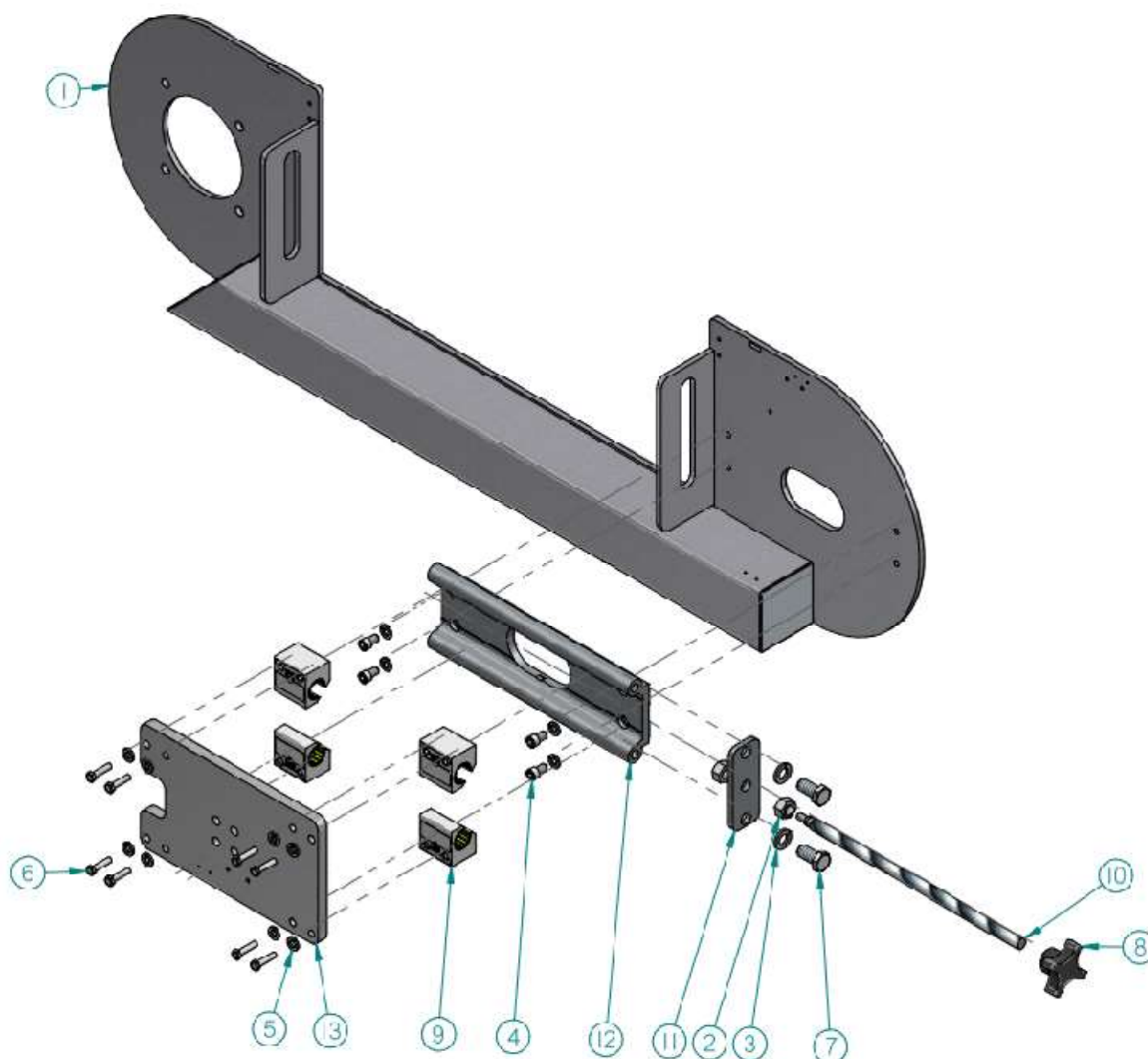


## 10.9: SLICER MOTOR



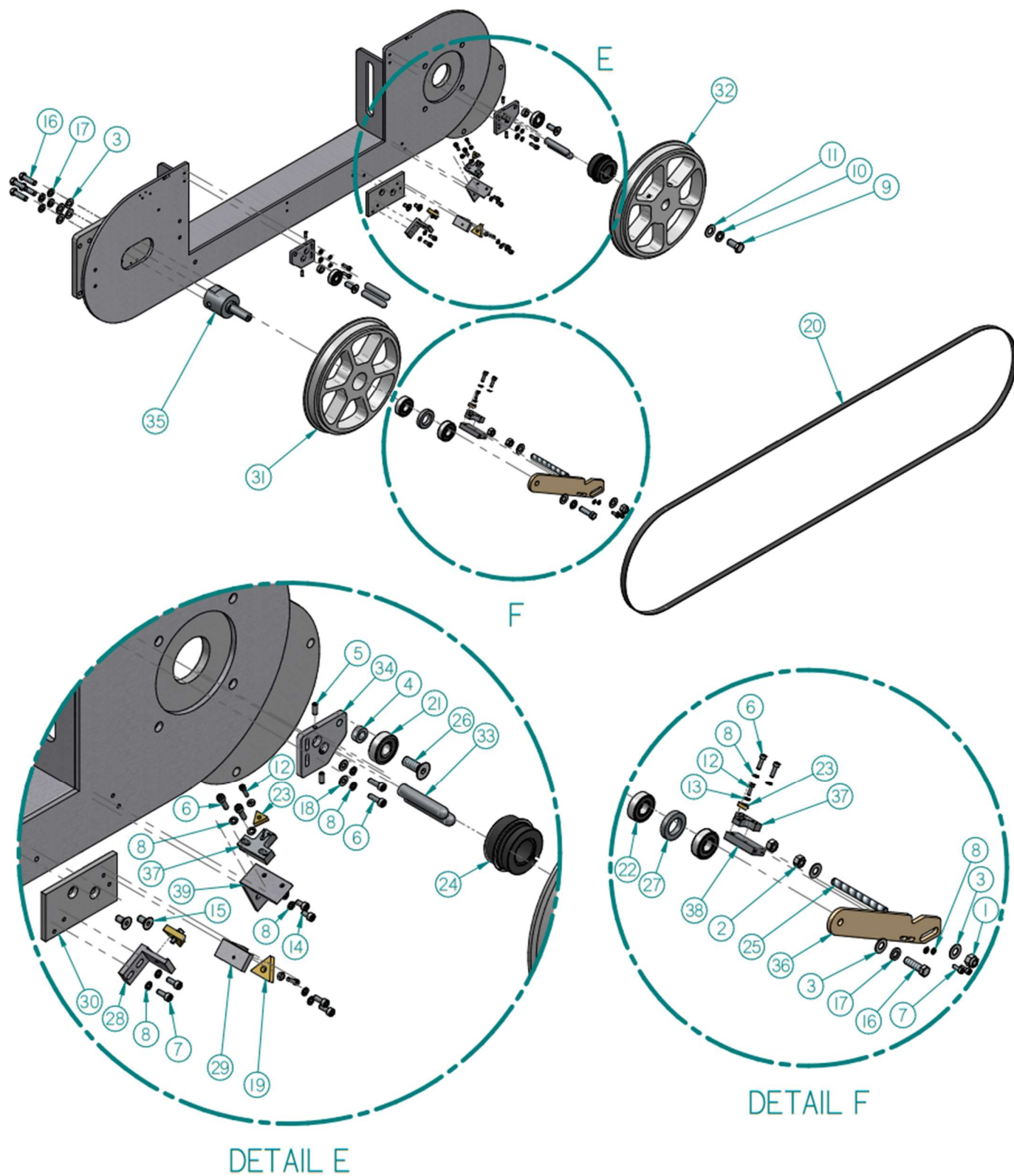
SLICER MOTOR			
No.	Part number	Qty	Title
1	PR-04620	1	BLADE SUPPORT ASSEMBLY
2	F06-250C04S	1	SET SCREW 1/4-20 X 1/4" STAINLESS
3	F11-190F04S	4	BUTTON HEAD 10-32 x 1/4" STAINLESS
4	F01-375	11	FLAT WASHER 3/8" ZINC
5	F02-375	11	LOCK WASHER 3/8" ZINC
6	F13-375C16	11	HEX HEAD 3/8-16 X 1" ZINC
7	F06-190F10S	2	SET SCREW 10-32 X 5/8" STAINLESS
8	PE-00272	1	MOTOR
9	PE-00116	1	CONNECTOR 3/8 STRAIGHT
10	PM-00056 (KLR.2000)	1	TIMING BELT
11	PM-01541-SC	1	COLLAR BEARING WITH SET SCREW
12	PM-01417-1	1	MACHINE KEY 1/4" ZINC
13	PR-04724	1	BACK PLATE
14	PR-01275	1	TIMING PULLEY
15	PR-04725	1	FRONT PLATE
16	PR-04726	5	SPACER SUPPORT
17	PR-09094	1	SHAFT
18	PR-04729	1	GUARD
19	PR-01274	1	TIMING PULLEY

## 10.10: BLADE TENSIONER



BLADE TENSIONER				
No.	Part number	Qty	Title	
1	PR-04620	1	BLADE SUPPORT ASSEMBLY	
2	F03-500C	2	NUT HEX 1/2-13 ZINC	
3	F02-500	2	LOCK WASHER 1/2" ZINC	
4	F10-312C08S	4	SOCKET CAP 5/16-18 X 1/2" STAINLESS	
5	F02-312S	12	LOCK WASHER 5/16" STAINLESS	
6	F13-M8-1.25X16S	8	HEX. HEAD M8-1.25 X 25 X 1" STAINLESS	
7	F13-500C16	2	HEX. HEAD 1/2-13 x 1" ZINC	
8	PM-01650	1	HANDLE	
9	PM-00198	4	RAIL SUPPORT	
10	PR-04629-01	1	ADJUSTMENT SCREW	
11	PR-04621	1	END PLATE	
12	PR-04882	1	RAIL IGUS	
13	PR-04611	1	MAST SUPPORT PLATE	

## 10.11: BLADE MECHANISM

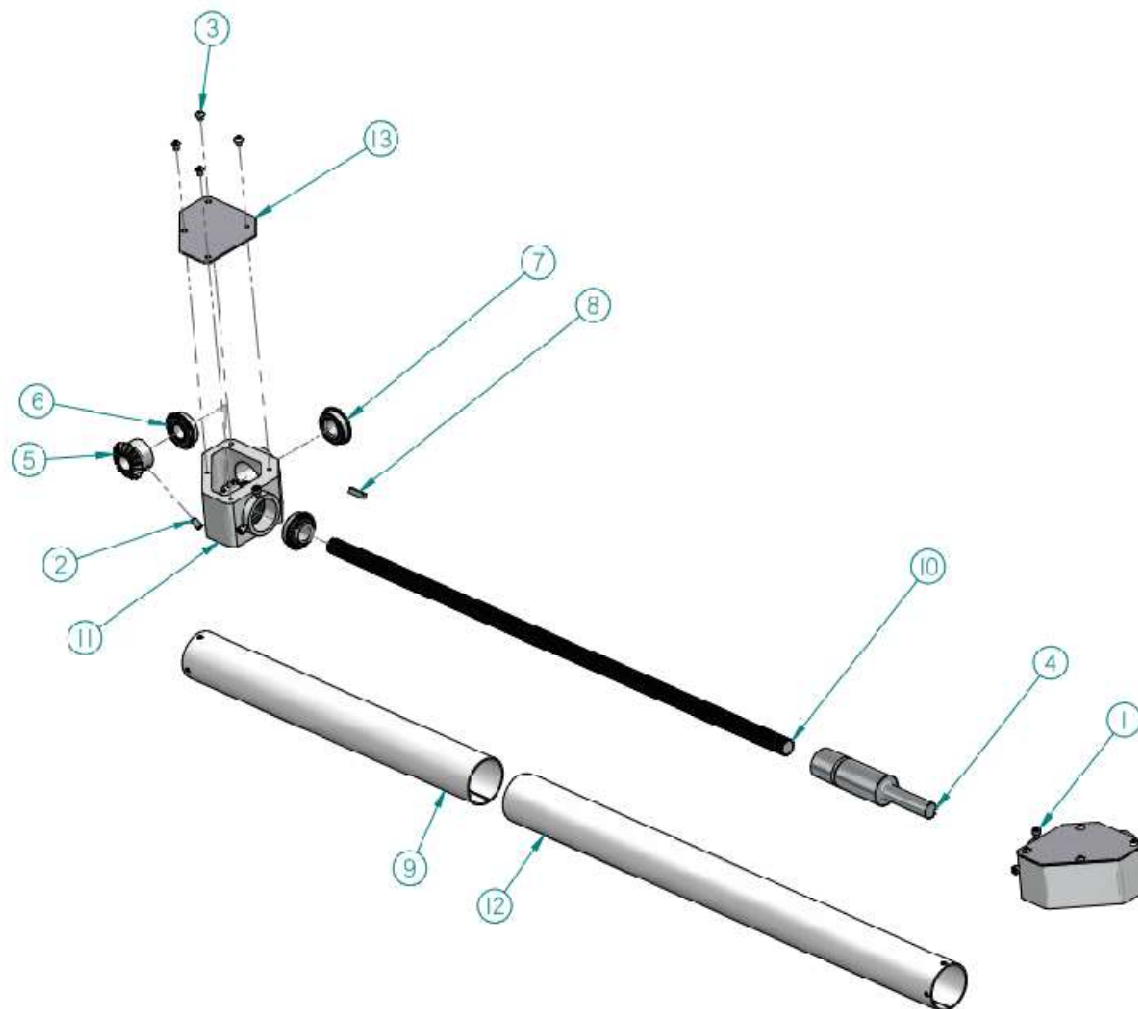




## 10.11.1: BLADE MECHANISM PART LIST

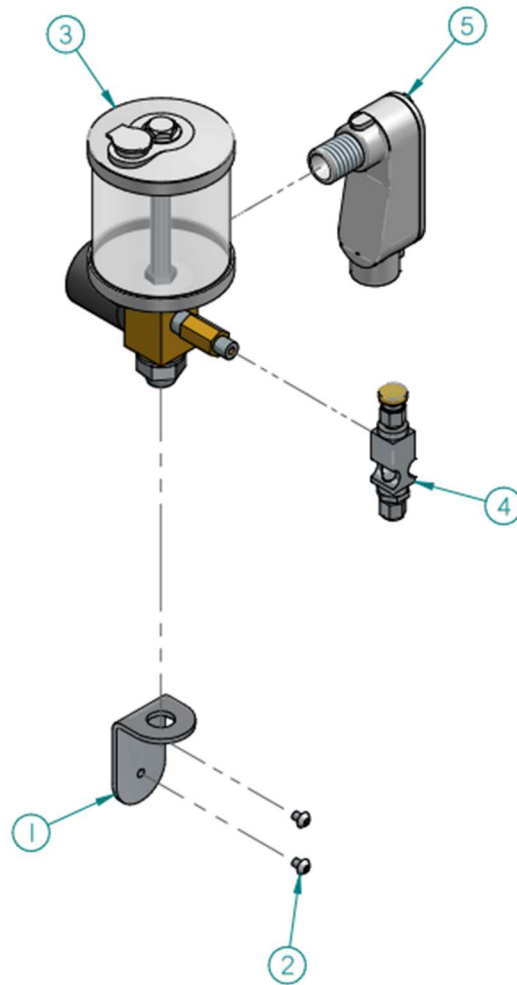
BLADE MECHANISM			
No.	Part number	Qty	Title
1	F03-375CNS	1	NYLON LOCK NUT 3/8-16 NC S.S.
2	F03-375CS	2	NUT 3/8-16 STAINLESS
3	F01-375S	7	FLAT WASHER 3/8" STAINLESS
4	B0625-0375-0250S	2	COUPLING, ID .375" , OD .625" x .250" LG
5	F06-190F08S	4	SET SCREW 10-32 X 1/2" STAINLESS
6	F10-190F10S	8	SOCKET CAP 10-32 X 5/8" STAINLESS
7	F10-190F08S	6	SOCKET CAP 10-32 X 1/2" STAINLESS
8	F02-190S	16	LOCK WASHER #10 STAINLESS
9	F13-500C16S	1	HEX. HEAD 1/2-13 x 1" STAINLESS
10	F02-500S	1	LOCK WASHER 1/2" STAINLESS
11	F01-500S	1	FLAT WASHER 1/2" STAINLESS
12	F10-138C08S	4	SOCKET CAP 6-32 X 1/2 STAINLESS
13	F02-138S	4	LOCK WASHER #6 STAINLESS
14	F10-190F06S	2	SOCKET CAP 10-32 X 3/8" STAINLESS
15	F12-250C08S	2	FLAT HEAD 1/4-20 X 1/2" STAINLESS
16	F13-375C20S	5	HEX. HEAD 3/8-16 X 1 1/4" STAINLESS
17	F02-375S	5	LOCK WASHER 3/8" STAINLESS
18	F01-190S	4	FLAT WASHER #10 STAINLESS
19	PM-02005	2	INSERT TOUR
20	L-98V1	1	BLADE
21	PM-00098	2	BEARING
22	PM-00108	2	BEARING
23	PM-02006	2	CUTTING TOOL
24	PM-01541	1	BEARING 1"
25	PR-01296	1	THREADED ROD 3/8-16 x 3 1/2
26	PR-01273	2	FLAT HEAD 3/8-16 x 3/4" STAINLESS
27	PR-09084	1	BUSHING
28	PR-09298	1	EQUERRE
29	PR-09297	1	EQUERRE
30	PR-09296	1	SUPPORT
31	PR-09079	1	PULLEY
32	PR-09078	1	PULLEY
33	PR-04679	4	TEMPERED GUIDE
34	PR-04717	2	GUIDE BLADE BRACKET
35	PR-04622	1	HUB FOR SLICER PULLEY
36	PR-04720-1	1	SCRAPER ARM
37	PR-04721	2	CARBIDE HOLDER
38	PR-04722	1	SCRAPER BLOCK
39	PR-04723-01	1	CARBIDE BRACKET

## 10.12: SPLINE SHAFT



SPLINE SHAFT			
No.	Part number	Qty	Title
1	F10-190F04S	4	SOCKET CAP 10-32 X 1/4 STAINLESS
2	F06-250C08	4	SET SCREW 1/4-20 X 1/2" STEEL
3	F11-190F04S	8	BUTTON HEAD 10-32 x 1/4" STAINLESS
4	PR-03479	1	SHAFT ASSEMBLY
5	PM-04000	4	METAL MITER GEAR
6	P02-00133	4	BEARING
7	PM-02133	4	BEARING
8	PM-01413	4	MACHINE KEY
9	PR-01194	1	PVC GUARD
10	PR-03480-3	1	SPLINE SHAFT
11	PR-03427	2	GEARBOX
12	PR-01193	1	PVC GUARD
13	PR-03428	2	COVER PLATE

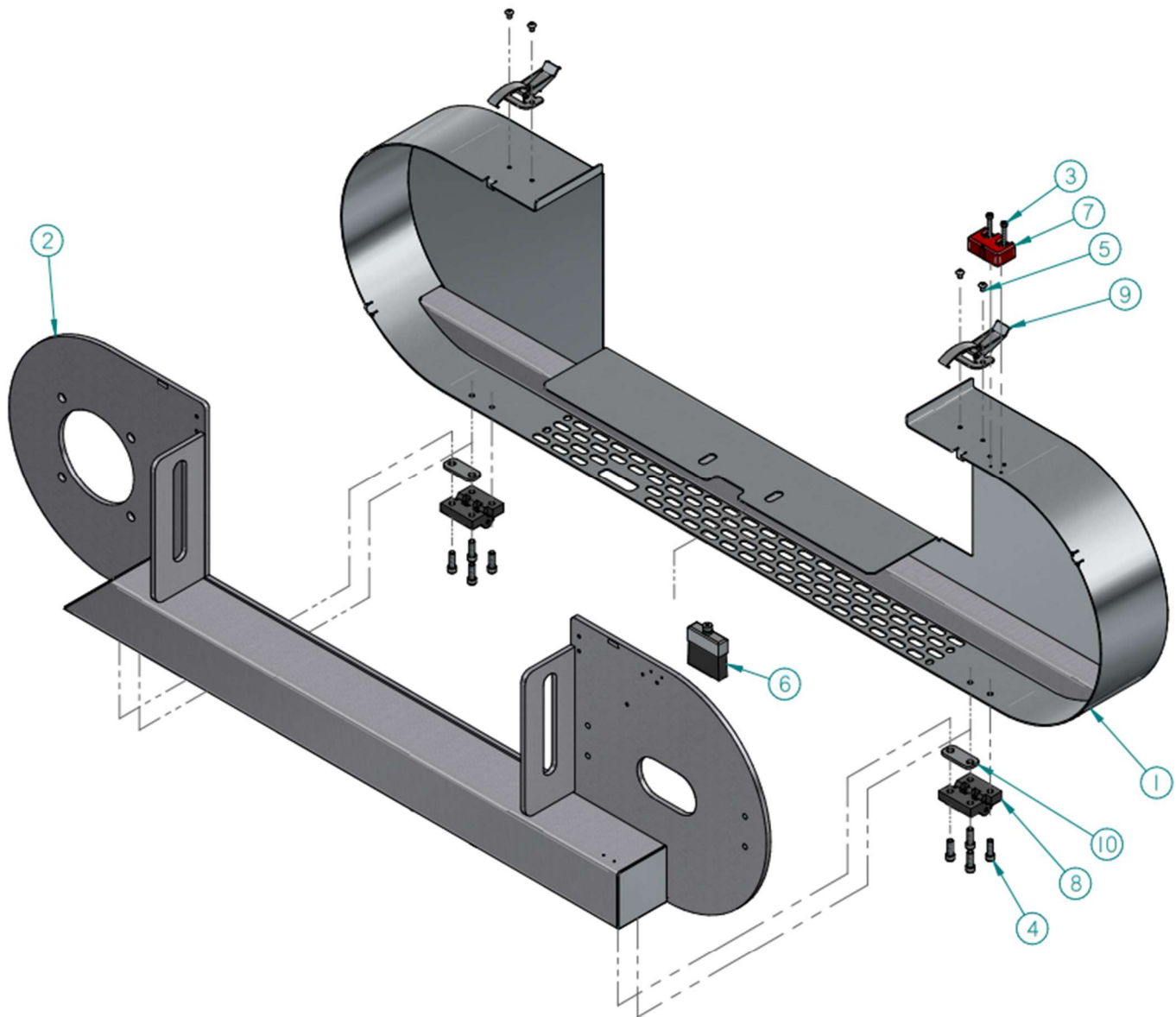
### 10.13: OIL CANISTER OPTION



KLR.2000			
No.	Part number	Qty	Title
1	PR-01297	1	BRACKET SUPPORT
2	F11-190F04S	2	BUTTON HEAD 10-32 x 1/4" STAINLESS
3	PM-03006	1	OILER
4	PM-03007	1	OILER VALVE
5	PE-00428	1	JONCTION BOX



## 10.14: BLADE COMPARTMENT COVER



### BLADE COMPARTMENT COVER

No.	Part number	Qty	Title
1	PR-09744	1	BLADE GUARD
2	PR-04620	1	BLADE SUPPORT ASSEMBLY
3	F10-164C16S	2	SOCKET CAP 8-32 X 1 STAINLESS
4	F10-250F12S	8	SOCKET CAP 1/4-28 X 3/4" STAINLESS
5	F11-190F04S	4	BUTTON HEAD 10-32 x 1/4" STAINLESS
6	PM-03008	1	BRUSH
7	PE-00538-A	1	SAFETY SWITCH
8	PM-00140	2	HINGE
9	PM-00158	2	CLAMP
10	PR-01198	2	SHIM

KLR.2000

Horizontal slicer manual

Serial number: KLR-00183 - beyond



Revision: 2024-08-21